

FOR LEASE

**3205 Swansea Crescent,
Unit 15, Ottawa, ON
Industrial Space**

Highlights:

- 1,758 SF
(Non-automotive
Uses Only)
- 18 ft Clear Height
- Overhead Grade Level
Door
- Closed Office
- Easy Access to the 417 &
Hunt Club Road

**For all inquiries please contact :
(Brokers Protected)**

Arthur Tallis, Broker

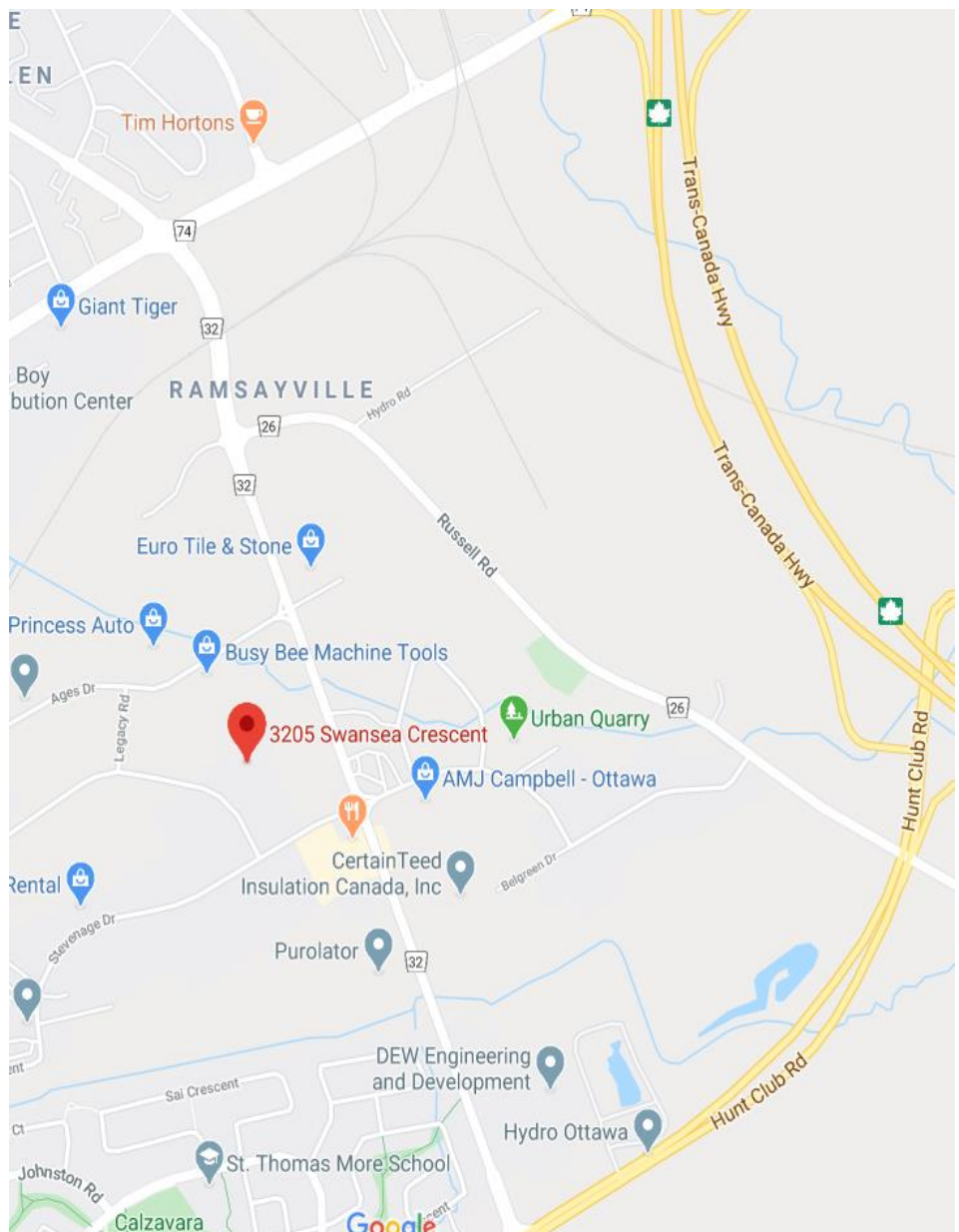
1 (613) 979-1855

atallis@capworthrealty.com

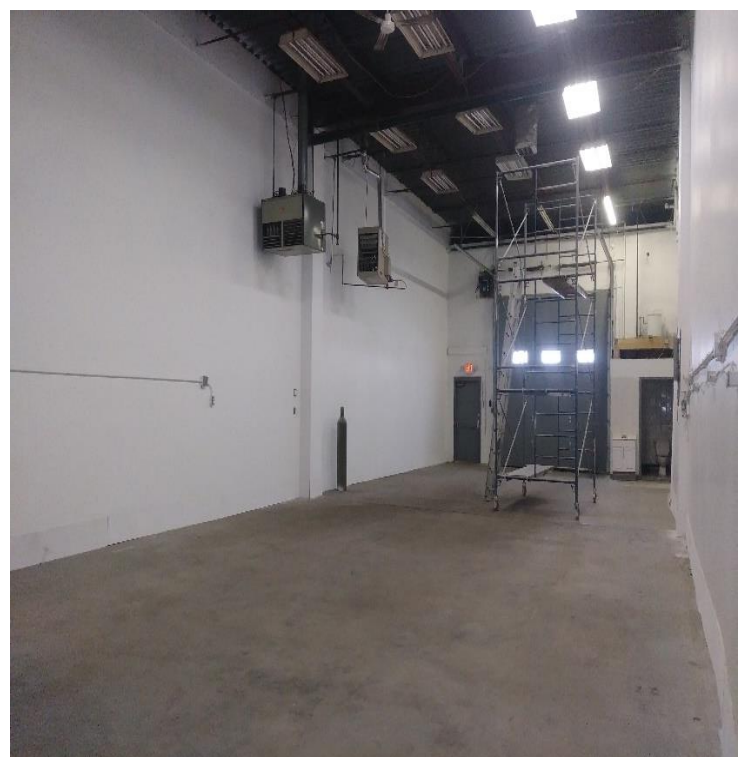
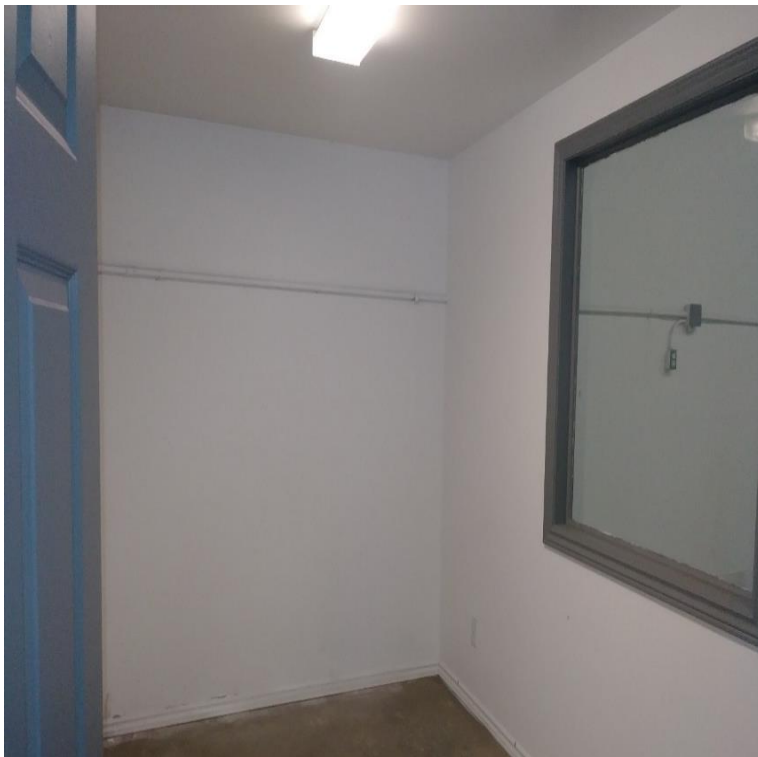
Denis Shank, Broker of Record

1 (613) 601-1353

dshank@capworthrealty.com



Unit 15: 1,758 SF (Non-automotive Uses Only)
Asking Rent: \$11.00 PSF With Inducement Package
Additional Rent: \$6.50 PSF



For all inquiries please contact **Arthur Tallis, Broker | 1 (613) 979-1855 | atallis@capworthrealty.com**
Denis Shank, Broker of Record | 1 (613) 601-1353 | dshank@capworthrealty.com

This document has been prepared by Capworth Commercial Realty Brokerage Corporation for the purpose of advertising and general information only. In regards to the information found within this document, Capworth Commercial Realty Brokerage Corporation makes no guarantees, representations or warranties of any kind, expressed or implied, regarding its accuracy and reliability. Any interested party should conduct a careful, independent investigation of the property to determine the suitability of the property for their specific needs.